

Shower trays FLAT

Mineral marble shower tray with anti-slip surface



UV
Resistant



Slip
Resistant



Stain
Resistant



Easy to Clean
and Maintain



International
Fire-spread
Compliant

Models:

Shower tray FLAT square

Shower tray FLAT rectangular

Shower tray FLAT semi-circular

Technical information

Material	Model	Dimension [cm]	Weight [kg]	Dimension [cm]	Weight [kg]
mineral marble	square	80x80 90x90	40 kg 50 kg	100x100	62 kg
	rectangular	100x75	47 kg	100x90	56 kg
		170x75	79 kg	120x90	66 kg
		90x80	44 kg	140x90	77 kg
		100x80	50 kg	160x90	89 kg
		120x80	63 kg	110x100	68 kg
				120x100	74 kg
	semi-circular	90x90 100x100	46 kg 59 kg		
Remark:	<ul style="list-style-type: none"> - drainage hole Ø90 - depth 2,0 cm 				

Declared properties

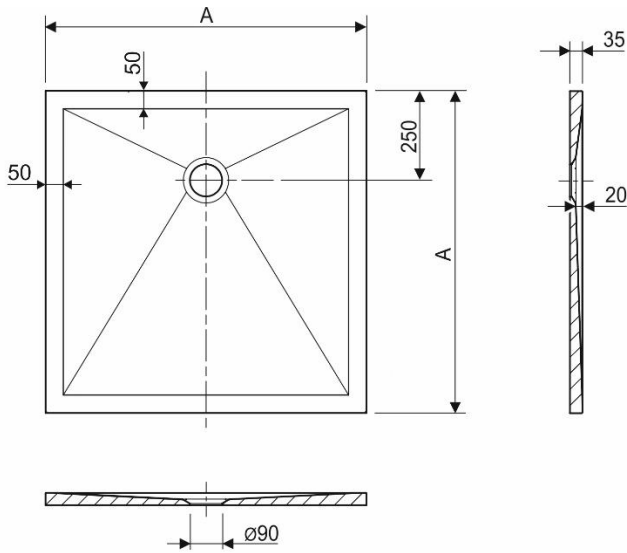
Tested properties	Requirement according to the European Standard	Confirmed level
- cleanability	EN 14527:2016 +A1:2018 – 6.2.1	Pass Class 2
- drainage of water	EN 14527:2016 +A1:2018 – 6.2.2	
- durability	EN 14527:2016 +A1:2018 – 6.3	

Analysis of possible risks according to EU Regulation 2023/988

Material	Recognized risk	Risk elimination or reducing process	Tests conducted	Relevant EU norm
Mineral marble	Fulfilling the requirements of the Norm	Testing the product according to the requirements of the relevant standards.	Aquaestil Plus Laboratory test report No. TTK-240522 from 22.05.2024.	HRN EN 14527:20016 +A1:2018
	Hygiene and health risk	According to its composition, the product is intended for household use, but not for water consumption. Potential Health Effects Additives in this product do not present a respiration hazard unless the product is ground to a powder of respirable size and the dust is inhaled.	Aquaestil Plus – Material Data Sheet – Mineral Marble	-
	Slipperiness of the surface	When getting in and out of the bathtub, hold on to a solid object or a handrail near the bathtub. Finishing the roughness of the surface by grinding or anti-slip coating.	Institute IGH d.o.o. 72530-OI-617-619-24 from 15.07.2023. Slip resistance of the floor covering	HRN EN 16165:2021, addition C (DIN 51097:1992)
	Flammability	Do not leave smoldering or hot objects on the products as they may damage the surface. The surface material can be combusted only with difficulty.	Aquaestil Plus – Material Data Sheet – Mineral Marble	-

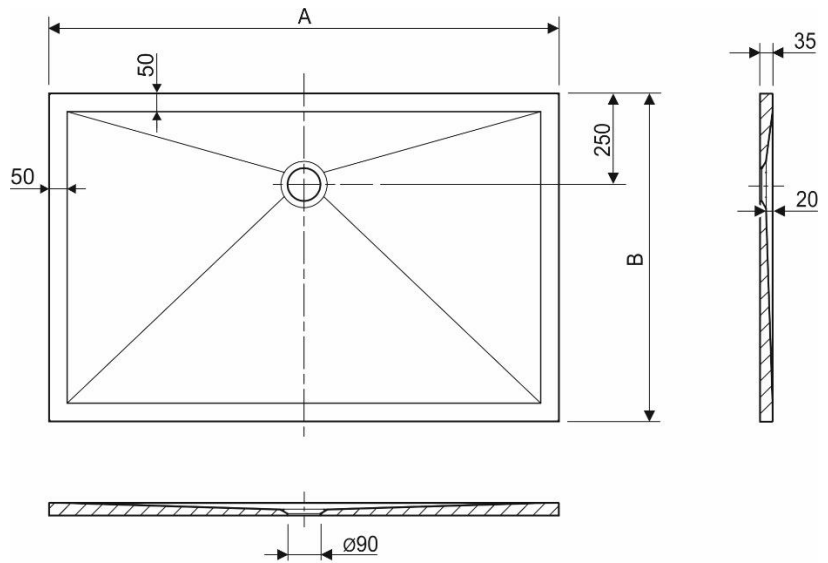
Technical drawing according to the model:

FLAT SQUARE



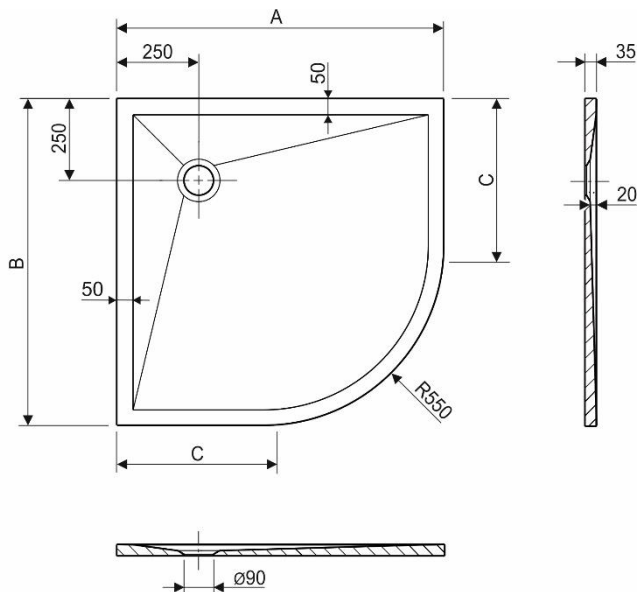
MODEL	A [mm]
80 x 80	800
90 x 90	900
100 x 100	1000

FLAT RECTANGULAR



MODEL	A [mm]	B [mm]
100 x 75	1000	750
170 x 75	1700	750
90 x 80	900	800
100 x 80	1000	800
120 x 80	1200	800
100 x 90	1000	900
120 x 90	1200	900
140 x 90	1400	900
160 x 90	1600	900
110 x 100	1100	1000
120 x 100	1200	1000

FLAT SEMI-CIRCULAR



MODEL	A [mm]	B [mm]	C [mm]
90 x 90	900	900	350
100 x 100	1000	1000	450